

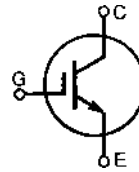
HiPerFAST™ IGBT

IXGA 7N60B*

IXGP 7N60B

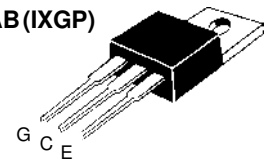
*Obsolete Part Number

$V_{CES} = 600 \text{ V}$
 $I_{C25} = 14 \text{ A}$
 $V_{CE(sat)} = 2 \text{ V}$
 $t_{fi} = 150 \text{ ns}$

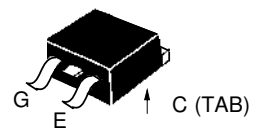


| Symbol | Test Conditions | Maximum Ratings | | |
|---|---|----------------------------------|------------------|-----------|
| V_{CES} | $T_J = 25^\circ\text{C to } 150^\circ\text{C}$ | 600 | V | |
| V_{CGR} | $T_J = 25^\circ\text{C to } 150^\circ\text{C}; R_{GE} = 1 \text{ M}\Omega$ | 600 | V | |
| V_{GES} | Continuous | ± 20 | V | |
| V_{GEM} | Transient | ± 30 | V | |
| I_{C25} | $T_C = 25^\circ\text{C}$ | 14 | A | |
| I_{C90} | $T_C = 90^\circ\text{C}$ | 7 | A | |
| I_{CM} | $T_C = 25^\circ\text{C}, 1 \text{ ms}$ | 30 | A | |
| SSOA (RBSOA) | $V_{GE} = 15 \text{ V}, T_{VJ} = 125^\circ\text{C}, R_G = 22 \Omega$ Clamped inductive load, $L = 300 \mu\text{H}$ | $I_{CM} = 14$ @ $0.8 V_{CES}$ | A | |
| P_C | $T_C = 25^\circ\text{C}$ | 54 | W | |
| T_J | | -55 ... +150 | $^\circ\text{C}$ | |
| T_{JM} | | 150 | $^\circ\text{C}$ | |
| T_{stg} | | -55 ... +150 | $^\circ\text{C}$ | |
| Maximum lead temperature for soldering 1.6 mm (0.062 in.) from case for 10 s | | 300 | $^\circ\text{C}$ | |
| M_d | Mounting torque, (TO-220) | M3 | 0.45/4 | Nm/lb.in. |
| | | M3.5 | 0.55/5 | |
| Weight | TO-220 | 4 | g | |
| | TO-263 | 2 | g | |

TO-220AB (IXGP)



TO-263 AA (IXGA)



G = Gate, C = Collector,
E = Emitter, TAB = Collector

Features

- International standard packages JEDEC TO-263 surface mountable and JEDEC TO-220 AB
- Medium frequency IGBT
- High current handling capability
- HiPerFAST™ HDMOS™ process
- MOS Gate turn-on - drive simplicity

Applications

- Uninterruptible power supplies (UPS)
- Switched-mode and resonant-mode power supplies
- AC motor speed control
- DC servo and robot drives
- DC choppers

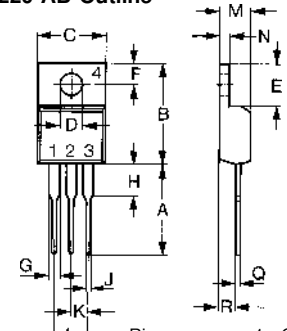
Advantages

- High power density
- Suitable for surface mounting
- Very low switching losses for high frequency applications

| Symbol | Test Conditions | Characteristic Values ($T_J = 25^\circ\text{C}$, unless otherwise specified) | | |
|---------------|---|---|------|----------------------|
| | | min. | typ. | max. |
| BV_{CES} | $I_C = 250 \mu\text{A}, V_{GE} = 0 \text{ V}$ | 600 | | V |
| $V_{GE(th)}$ | $I_C = 250 \mu\text{A}, V_{CE} = V_{GE}$ | 2.5 | | 5.5 V |
| I_{CES} | $V_{CE} = 0.8 V_{CES}, V_{GE} = 0 \text{ V}$ | $T_J = 25^\circ\text{C}$ | | 100 μA |
| | | $T_J = 125^\circ\text{C}$ | | 500 μA |
| I_{GES} | $V_{CE} = 0 \text{ V}, V_{GE} = \pm 20 \text{ V}$ | | | $\pm 100 \text{ nA}$ |
| $V_{CE(sat)}$ | $I_C = I_{C90}, V_{GE} = 15 \text{ V}$ | 1.8 | 2.0 | V |

| Symbol | Test Conditions | Characteristic Values ($T_J = 25^\circ\text{C}$, unless otherwise specified) | | |
|--------------|---|---|------|---------|
| | | min. | typ. | max. |
| g_{fs} | $I_C = I_{C90}, V_{CE} = 10\text{ V}$, Pulse test, $t \leq 300\ \mu\text{s}$, duty cycle $\leq 2\%$ | 3 | 7 | S |
| C_{ies} | $V_{CE} = 25\text{ V}, V_{GE} = 0\text{ V}, f = 1\text{ MHz}$ | | 500 | pF |
| C_{oes} | | | 50 | pF |
| C_{res} | | | 17 | pF |
| Q_g | $I_C = I_{C90}, V_{GE} = 15\text{ V}, V_{CE} = 0.5 V_{CES}$ | | 25 | nC |
| Q_{ge} | | | 5 | nC |
| Q_{gc} | | | 10 | nC |
| $t_{d(on)}$ | Inductive load, $T_J = 25^\circ\text{C}$ $I_C = I_{C90}, V_{GE} = 15\text{ V}, L = 300\ \mu\text{H}$, $V_{CE} = 0.8 V_{CES}, R_G = R_{off} = 22\ \Omega$ Remarks: Switching times may increase for V_{CE} (Clamp) $> 0.8 V_{CES}$, higher T_J or increased R_G | | 9 | ns |
| t_{ri} | | | 10 | ns |
| E_{on} | | | 0.07 | mJ |
| $t_{d(off)}$ | | | 100 | 200 ns |
| t_{fi} | | | 150 | 250 ns |
| E_{off} | | | 0.3 | 0.6 mJ |
| $t_{d(on)}$ | Inductive load, $T_J = 125^\circ\text{C}$ $I_C = I_{C90}, V_{GE} = 15\text{ V}, L = 300\ \mu\text{H}$ $V_{CE} = 0.8 V_{CES}, R_G = R_{off} = 22\ \Omega$ Remarks: Switching times may increase for V_{CE} (Clamp) $> 0.8 V_{CES}$, higher T_J or increased R_G | | 10 | ns |
| t_{ri} | | | 15 | ns |
| E_{on} | | | 0.15 | mJ |
| $t_{d(off)}$ | | | 200 | ns |
| t_{fi} | | | 250 | ns |
| E_{off} | | | 0.6 | mJ |
| R_{thJC} | | | | 2.3 K/W |
| R_{thCK} | (TO-220) | 0.25 | | K/W |

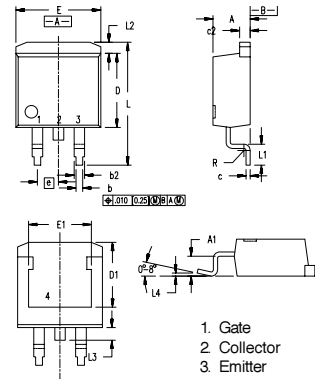
TO-220 AB Outline



Pins:
1 - Gate
2 - Collector
3 - Emitter
4 - Collector
Bottom Side

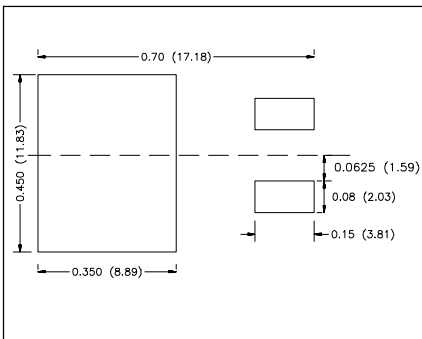
| Dim. | Millimeter | | Inches | |
|------|------------|-------|--------|-------|
| | Min. | Max. | Min. | Max. |
| A | 12.70 | 13.97 | 0.500 | 0.550 |
| B | 14.73 | 16.00 | 0.580 | 0.630 |
| C | 9.91 | 10.66 | 0.390 | 0.420 |
| D | 3.54 | 4.08 | 0.139 | 0.161 |
| E | 5.85 | 6.85 | 0.230 | 0.270 |
| F | 2.54 | 3.18 | 0.100 | 0.125 |
| G | 1.15 | 1.65 | 0.045 | 0.065 |
| H | 2.79 | 5.84 | 0.110 | 0.230 |
| J | 0.64 | 1.01 | 0.025 | 0.040 |
| K | 2.54 | BSC | 0.100 | BSC |
| M | 4.32 | 4.82 | 0.170 | 0.190 |
| N | 1.14 | 1.39 | 0.045 | 0.055 |
| Q | 0.35 | 0.56 | 0.014 | 0.022 |
| R | 2.29 | 2.79 | 0.090 | 0.110 |

TO-263 AA Outline



1. Gate
2. Collector
3. Emitter
4. Collector
Bottom Side

| Dim. | Millimeter | | Inches | |
|------|------------|-------|--------|------|
| | Min. | Max. | Min. | Max. |
| A | 4.06 | 4.83 | .160 | .190 |
| A1 | 2.03 | 2.79 | .080 | .110 |
| b | 0.51 | 0.99 | .020 | .039 |
| b2 | 1.14 | 1.40 | .045 | .055 |
| c | 0.46 | 0.74 | .018 | .029 |
| c2 | 1.14 | 1.40 | .045 | .055 |
| D | 8.64 | 9.65 | .340 | .380 |
| D1 | 7.11 | 8.13 | .280 | .320 |
| E | 9.65 | 10.29 | .380 | .405 |
| E1 | 6.86 | 8.13 | .270 | .320 |
| e | 2.54 | BSC | .100 | BSC |
| L | 14.61 | 15.88 | .575 | .625 |
| L1 | 2.29 | 2.79 | .090 | .110 |
| L2 | 1.02 | 1.40 | .040 | .055 |
| L3 | 1.27 | 1.78 | .050 | .070 |
| L4 | 0 | 0.38 | 0 | .015 |
| R | 0.46 | 0.74 | .018 | .029 |



Min. Recommended Footprint (Dimensions in inches and mm)

IXYS reserves the right to change limits, test conditions, and dimensions.



Disclaimer Notice - Information furnished is believed to be accurate and reliable. However, users should independently evaluate the suitability of and test each product selected for their own applications. Littelfuse products are not designed for, and may not be used in, all applications. Read complete Disclaimer Notice at www.littelfuse.com/disclaimer-electronics.